



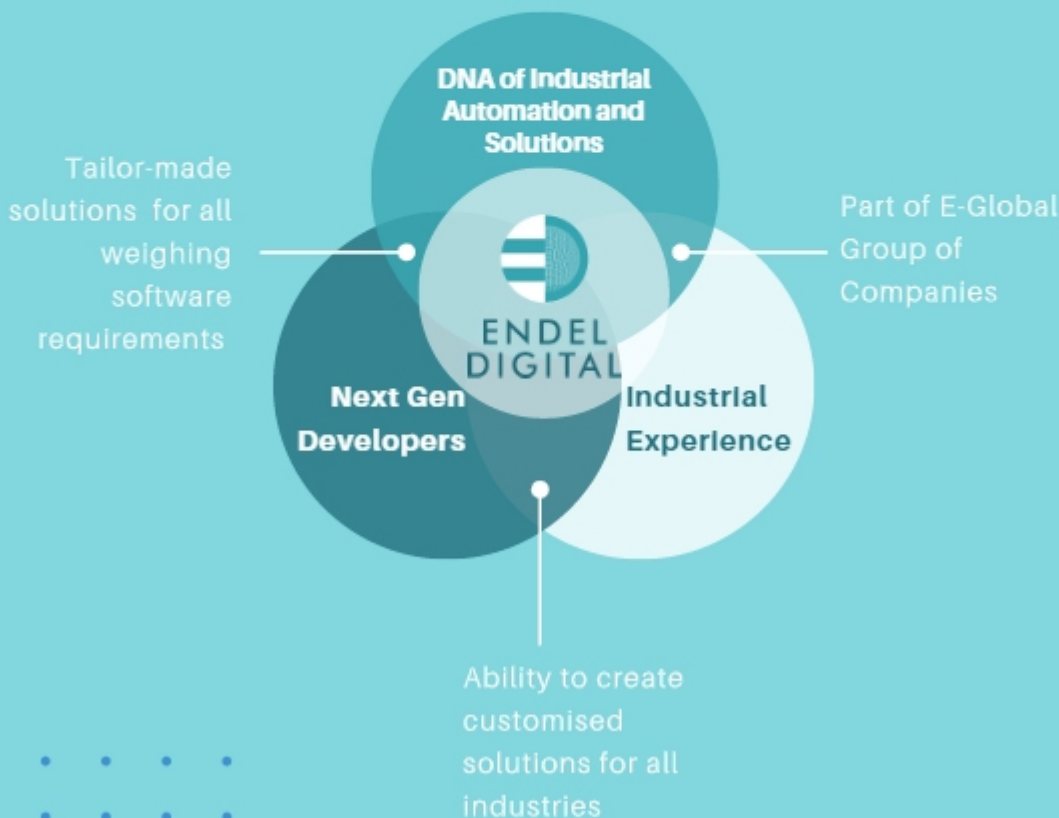
ENDEL
DIGITAL

Automate. Innovate. Accelerate



About Endel Digital

Endel Digital is an industrial software solutions provider, having presence in India, Middle East, and Africa with a strong industrial lineage. Endel Digital delves deep into the realm of the customized solutions by conceptualizing and delivering top-of-the-line weighing software solutions. We offer an array of solutions catering to a wide range of industry requirements by leveraging on its domain competence and partnerships with reputed technology providers.



Our Products

- WeighMAST: Weighbridge data management software
- Unmanned weighbridge solution
- Gate and visitor management solution
- Batch processing automation
- Tank weighing software solution
- Weighing software solution for Mining industries
- Lab Information Management solution
- Dispatch and inventory management solution
- Complete customized industrial automation solutions





Complete weighbridge software solutions



1. Transaction management

WeighMAST offers complete transaction visibility and ensures that no data can be tampered with.



2. Security

The role-based access management of WeighMAST ensures transparency and reduces chances of data tampering or faltering. The roles can be configured in different ways.



3. Flexibility

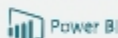
Easy-to-use, customized themes fit for your company. WeighMAST comes in 3 different models, each with a variety of features.



4. Receipt design

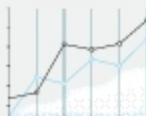
Inbuilt receipt designing software allows for custom designs, with predefined logos, footnotes, text. Automatically sends email receipts as well.

ORACLE



5. ERP and Tally Integration

Integration with SAP or ERP systems, allows for management of multiple weighbridges, and centralised web reporting, which allows you to view all the information from a remote location



6. Reports

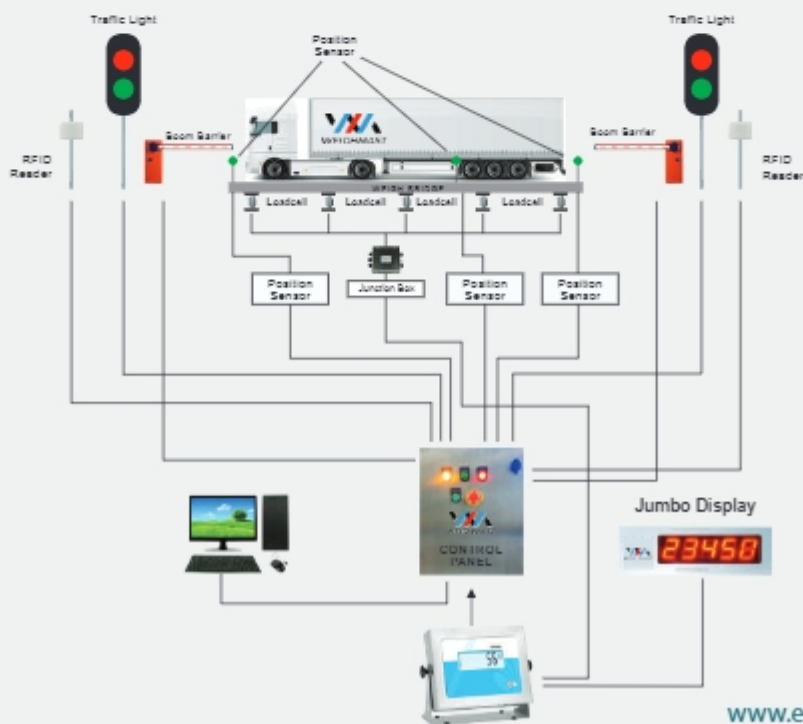
The software creates master reports and audit reports on its own.

Unmanned Weighing System

Our fully automated unmanned weighbridge system promises 100% accurate weighing, without any human intervention.

Unmanned system can be integrated with the following hardware;

- RFID Reader
- ANPR Camera
- Automated position inspection system
- Traffic lights
- Boom barriers and security
- CCTV Video Surveillance
- Digital displays



Bluetooth Mobile Application for Weighing

Bluetooth mobile applications for weighing scales are the easiest and most efficient manner to get accurate weightment data captured on the phone, eliminating the chances of any tampering of data. Users can see the live weight on their mobile screens and operate the actions of the weighing scale from their mobile phones. Sharing data of weightments done in batches enhances billing efficiency, transparency, supervision and convenience.

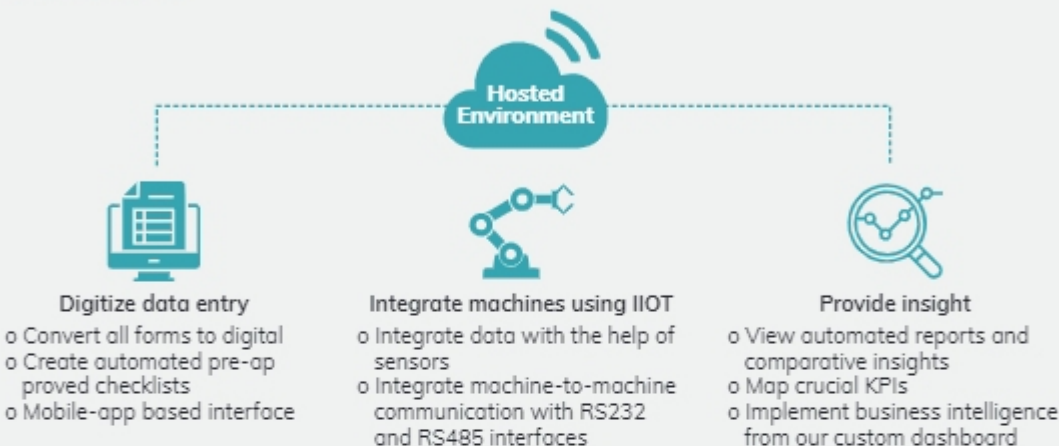


Key features and USPs:

- The application can be used with any type of tabletop, platform scale, or tank weighing system, and it connects to your Android smartphone via Bluetooth.
- Users can see the real-time weight on the scale on their mobile screen as well as operate the keys of the weighing scale from the mobile app.
- You can connect the app to a POS system to generate invoices or bills directly.
- Create custom reports and trend graphs, and automatic notification systems
- Connect the app to RFID readers for validation and batch scale operations.
- Sync the app with existing ERP or Cloud systems for complete data transparency
- Applications for Pharmaceutical and healthcare, Agriculture and dairy, logistics, and many more.

Batch Processing System

Batch processing is at the heart of core manufacturing operations, and our Batch Processing System is a refreshing new platform designed to ensure the customer's manufacturing operations are optimised. Our software is designed by keeping in mind the ease of use and user personas, creating value for each employee at every level of the hierarchy.



Providing detailed business insights



Out-of-box dashboards for easy access to critical information. Role-based access to ensure right person gets the details.

Enhanced Reporting



Get complete customized reports and filters to map the data in realtime

Secure access



Role based access ensures that only the right person gets visibility to the relevant datasets, that they are authorized to view.

Real-time and accurate



Nearly real-time data visibility and data entry, data remains temper free as edits are disable unless authorized by the divisional head.

Integration with 3rd Party application



Our software supports flexibility of integration with any existing applications like PowerBI, Tableau, or any ERP Solution.



Total laboratory solutions for accurate preventive maintenance and calibration

LabMAST is a smart lab management solution, designed to adequately manage the various types of information in industrial laboratories. It advances all forms of lab management systems, starting from sample registration to result and report generations.



It is the best solution to protect your operations from human inaccuracy, this provides you with better control and ability to accelerate your business faster.

Sample Management

LabMAST provides a comprehensive functionality surrounding the log-in of samples, and providing different manual samples. this includes- sample login, group sample log in, clinical protocol log-in and more.

Test Scheduling

LabMAST includes several features to define the scheduled events for automated sample logins and reporting. these schedules can create the sample to be collected and processed in the lab, and provide the information about the future samples and tests.

Result entry

Extensive capabilities that effectively streamline and reduce the transcription errors in result entry. Automated result entry is provided via file import or interfaces to the laboratory instruments.

Dashboard

Projects

Priority

List

Comparison

DC Compound

DC Machine

Calibration & PM

My Projects

Select Finance Year Range

Show 10 entries

Search

Project No. #	Objective	Creation Date	Completion Date	Tester	Status	Action
PFX-20-13	Test	01-Dec-2020 06:30 PM	A: N/A S: N/A	A: N/A S: N/A	Approved & Ready for assign	...
PFX-20-10	Urgent	01-Dec-2020 05:02 PM	A: N/A S: N/A	A: N/A S: N/A	Approved & Ready for assign	...
PFX-20-9	Test	01-Dec-2020 04:58 PM	S: 04-Dec-2020 10:51 AM A: N/A	S: Arun Prister A: N/A	Physical : Management Executive Assigned Analytical : Approved & Ready for assign	...
PFX-20-7	Objective	11-Nov-2020 09:32 PM	A: 18-Nov-2020 11:54 AM S: N/A	A: Arun Prister S: N/A	Physical : Approved & Ready for assign Analytical : Management Executive Assigned	...
AI-00-012	Mixed Test Cases	06-Sep-2020 12:26 PM	A: N/A S: N/A	A: N/A S: N/A	Approved & Ready for assign	...
PFX-20-6	Analytical Test	04-Sep-2020 07:19 PM	A: 23-Sep-2020 03:00 PM S: N/A	A: Arun Prister S: N/A	Analytical : Management Executive Assigned	...
BR-20-004	Do Special Test For Type	04-Sep-2020 06:55 PM	A: N/A S: N/A	A: N/A S: N/A	Approved & Ready for assign	...
BR-20-003	Do Special Test For Type	24-Aug-2020 06:50 PM	A: 29-Sep-2020 06:00 PM S: 12-Sep-2020 04:10 PM	A: Arun Prister S: Arun Prister	Physical : Management Executive Assigned (Pending) Analytical : Management Executive Assigned (Solved)	...
BR-20-12	Two Component Mixer	22-Aug-2020 03:45 PM	A: 16-Sep-2020 11:30 AM S: 27-Aug-2020 10:16 PM	A: Arun Prister S: Arun Prister1	Fully Closed	...
BR-20-11	Two Component Mixer	22-Aug-2020 03:43 PM	A: 18-Sep-2020 03:30 AM S: N/A	A: Arun Prister S: N/A	Physical : Approved & Ready for assign Analytical : Management Executive Assigned	...

Showing 1 to 10 of 14 entries

Previous 1 2 Next

My Projects shows a summary of all the projects, and their purpose, completion schedule, and the current statuses

Dashboard

Projects

DC Compound

Machine

Calibration & PM

Calibration

Calibration Calendar

PM

PM Calendar

Calibration Calendar

Select Year *

2020-2021

Search

Reset

Export

Show 10 entries

Search

Sr No. #	Action	Machine ID	Machine Name	Make Model Number	Serial Number	Instrument Number	Dept./Area	Type of Calibration
1	 	8	Machine type 3	sqpww530Te0535	BAM257187274CW	BAM25718727QAW	physical lab	Internal
2	 	7	Machine Test 2	CCH5887Y988KJ	BAM70879874	BAM257187274ED	Physical Lab, Analytic Lab	External
3	 	7	Machine Test 2	CCH5887Y988KJ	BAM70879874	BAM257187274ED	Physical Lab, Analytic Lab	Internal
4	 	5	TYRE ROLLING MACHINE	01/12/2008	TAM578631CEAT57	1247TAM57C92	Physical Lab	External
5	 	4	THREAD JAMMING	14MAR2017	01254708874	TEST1234578DF	Physical Lab	External
6	 	4	THREAD JAMMING	14MAR2017	01254708874	TEST1234578DF	Physical Lab	Internal
7	 	3	TBM DRUMS	TD0510151240	TD2478C30	TD2478WD6872H	Physical Lab	External
8	 	2	BEAD SPEWING MACHINE	CCH5887Y988KJ	BAM70879888	BAM257187F68MA	Physical Lab	Internal
9	 	1	Machine test 1	CCHG887Y988KJ	0Y70879898	VC2GDRU6FU987987	Physical Lab	External
10	 	1	Machine Test 1	CCHG887Y988KJ	0Y70879898	VC2GDRU6FU987987	Physical Lab	Internal

Showing 1 to 10 of 10 entries

Previous

1

Next

Calibration Calendar is a crucial feature for all companies, as it shows when the calibration certificates expire and the equipment needs to be recalibrated.

Gate Management System

Manage, control and monitor the complete vehicle logs, and visitor logs to your premises. Our system helps your organization achieve;

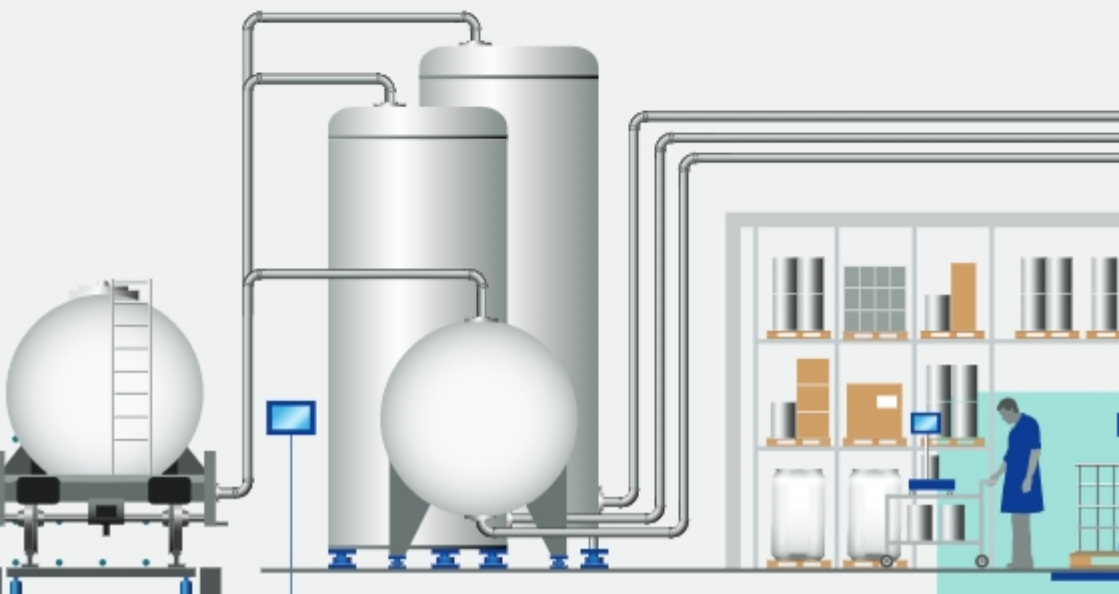
- **Ease of use**- Simple UI to ensure that all users can adapt quickly.
- **Role-based access**- only allow the right personnel view your organization's data.
- **Workflow**- different stages of the vehicle movement would be accessed and supported by the system in the premises.
- **Better visibility**- complete real time data visibility to ensure that accurate business decisions are being taken.
- **Better to maintain**- flexible and Customisable system, fit for your organization and personnel.



Tank Weighing System




Manufacturing companies dealing with large volume of raw materials, requires an accurate weighing management system, to prevent wastage, and enhance the productivity of the staff and the equipment in use.

- o Real time data and reports on the utilization of machines
- o Integrate all tanks on-site
- o Alerts and reminders for tank cleaning and maintenance
- o Enhance the process through preventive maintenance
- o Access all data from the cloud
- o Complete customized dashboards to give data visibility and map the necessary KPIs



Get in Touch

 info@endel.digital  +91 99796 12342  www.endel.digital

 [Endel Digital Solutions](#)  [Endel Digital Solutions](#)  [Endel Digital](#)

